

2-PortHilscher netX100FieldBusmPCIe, EtherCAT, RJ45

This manual provides the brief steps of firmware installation.

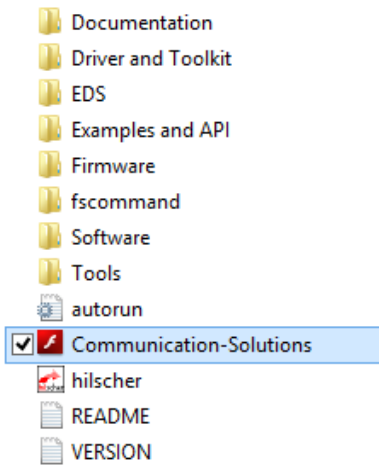
1. Hardware Installation

- Before beginning installation take the necessary safety precautions.
- Open the cabinet of the PC or the connect device.
- Plug in and mount the optional interface card.
- Close the cabinet

2. Driver and Software Installation

- Connect power to the PC or connecting device and switch it on.

Enter the Communication Solutions application in the PC and follow to the instructions of the installation wizard, to install the driver.



2.1 cifX Driver Installation

- Click Install cifX / netJACK Device Driver



2.2 SYCON.net Installation

- Run SYCON.net-Setup and follow the instructions of the installation wizard.

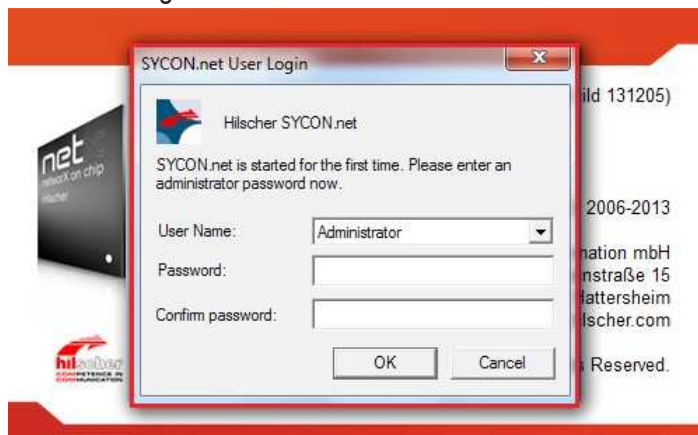


3. Firmware Installation

Download Firmware and Configuration Use the corresponding Master DTM in the configuration software SYCON.net

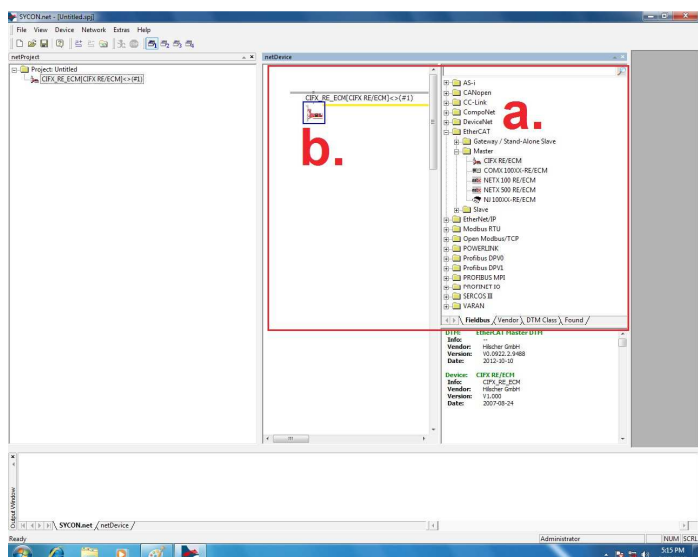
3.1 Configuring Master using SYCON.net

- Run SYCON.net and set the user password at the first-time login.



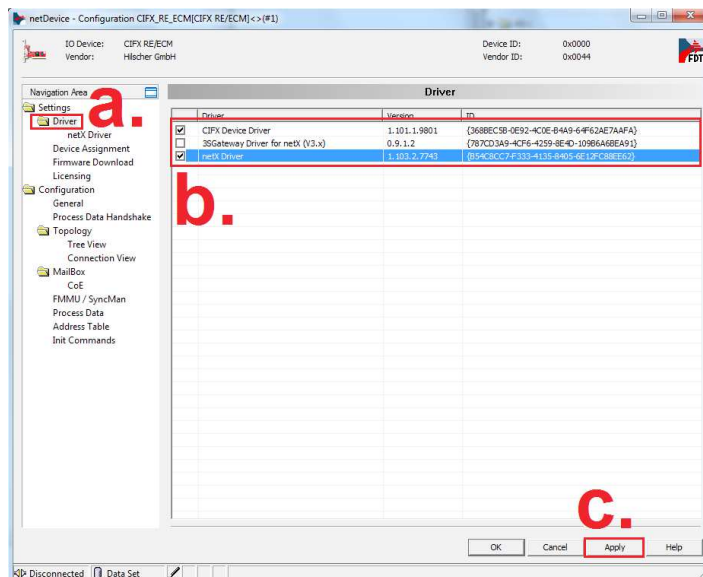
3.2 Configuring cifX (Master)

- Click "CIFX RE/ECM" then drag to line of netDevice.
- Double Click the icon.



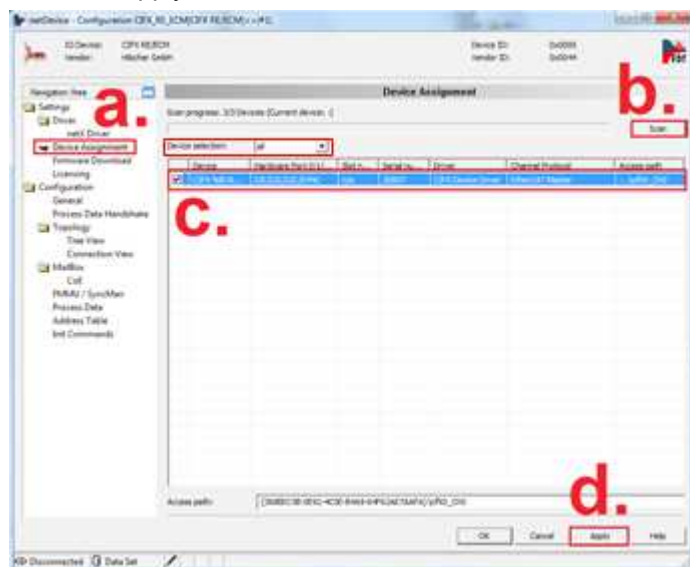
3.3 Selecting the Driver

- Click "Driver"
- Select "CIFX Device Driver" and "netX Driver"
- Click "Apply"



3.4 Selecting "DeviceAssignment"

- Click "Device Assignment" and Device selection "all"
- Click "Scan"
- Select "Device : CIFX, Channel Protocol : EtherCAT Master"
- Click "Apply"



3.5 Firmware Download

- Click "Firmware Download"
- Click "Browse"
- Select the Downloaded Firmware File(CIFXECM.NXF).
> Refer to PS5000_EtherCAT_Firmware_xx.exe on Web Site.
- Click "Download"

